



Hunter
Products



MODEL ZP5058 PINK POPSTAR CAR SERVICE GUIDE

Please follow the directions in the attached service guide to check the connections on your ride on. Most times it is a loose plug or switch that causes electric ride's to stop working.

Keep in mind the ride will not operate if the power adaptor/charger cable is plugged into the ride, this is a safety feature to ensure a child does not take off while it's plugged in and damage it.

Disconnect the charger from the car before trying to operate it.

To rule out a faulty fuse:

1. Under the seat in the battery compartment please disconnect the short cable from the red terminal of the battery.
2. Then disconnect the long cable that comes from the ride on wiring to the fuse
3. Connect this cable directly to the red terminal of the battery.

So what you have left over is the small black fuse and a short cable attached to it that are not connected to the ride. This is bypassing the fuse, try this to see if it is in fact a faulty fuse.

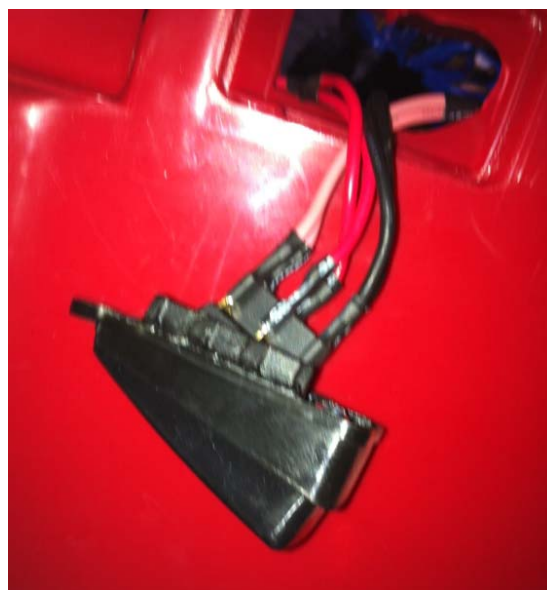
If you have a ride on that is 18+ months old and after following these directions you cannot get it going we recommend removing the battery and having the battery & charger tested by a professional.

Batteryworld.com.au offer this service over the counter in your local outlet.

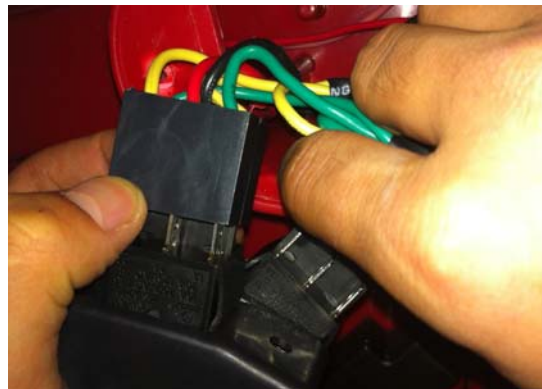
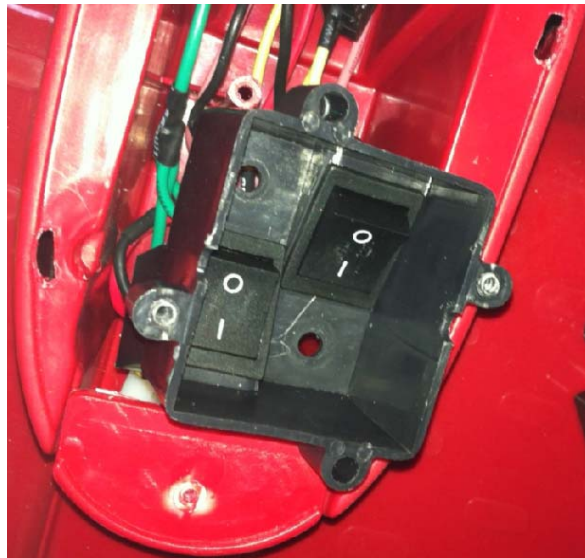
1. Please make sure the motor box's connection is plugged firmly as picture shown.



2. Turn the vehicle body to check if the pedal switch is connected to the wiring firmly.



3. Pls make sure the forward and reverse switch is plugged firmly.



4. Open the hood of the vehicle to check if the battery connection is plugged or not.



5. Separate the steering wheel and check if the on/off switch is plugged.

