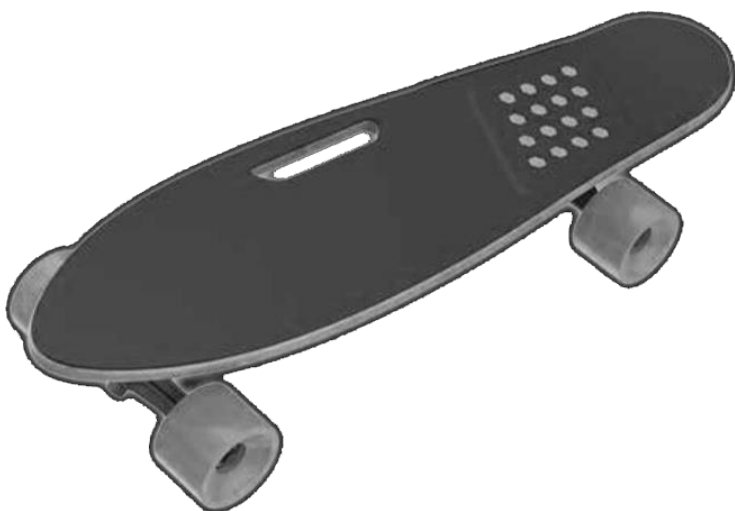


E-Skateboard



User Manual



If you are experiencing any difficulties with this product, please contact Hunter Products Customer Service at **www.electricrideon.com.au** or **Toll Free Number 1800 224 094** for service assistance.

HELMETS SAVE LIVES!

**Always wear a properly fitted helmet that
complies with AS/NZS 2063:2008**

▲ WARNING!

PLEASE READ THE USER MANUAL THOROUGHLY.

Failure to follow the basic instructions and safety precautions listed in the user manual can lead to damage to your device, other property damage, serious bodily injury, and even death.

Thank you for purchasing the Power-Assisted Skateboard. Please read all instructions carefully before using and retain this manual for future use and reference.

This product is intended for private property use only. Not to be used on public roads or in public spaces.

- In order to avoid dangers that are caused by collisions, falls, and loss of control, please learn how to ride safely.
- You can learn operating skills by reading the product manual and watching videos.
- This manual includes all operating instructions and precautions, and users must read it carefully and follow the instructions.

ATTENTION

1. Use only the charger supplied with this skateboard.
Charger Model #: HK-AD-252A060-AU
The operating temperature range of the charger is - 2 0 - 50° C
2. The operating temperature range of the e-skateboard is 0° C - 40° C
3. Do not ride on wet or slippery surfaces.
4. Read the user manual and warning labels before riding.
5. Store the e-skateboard in a dry, well ventilated area.
6. When transporting the E-skateboard, avoid violent crashes or impact.

SAFETY INSTRUCTIONS

- Keep the device away from heat sources, direct sunlight, humidity, water and any other liquids.
- Do not operate the device if it has been exposed to water, moisture or any other liquids to prevent against electric shock, explosion and/or injury to yourself and damage to the device.
- Do not use the device if it has been dropped or damaged in anyway.
- Repairs to electrical equipment should only be performed by the manufacturer. Improper repairs voids the warranty and may place the user at serious risk.

- Do not puncture or harm the exterior surface of the product in any way.
- Keep the device free from dust, dirt, lint, etc.
- Do not use this device for anything other than its intended use or purpose. Doing so may damage the device or lead to property damage, injury or death.
- This product is not a toy. Keep out of reach of children. Ages 9 years +
- Do not expose batteries, battery pack, or batteries installed to excessive heat, such as direct sunlight, or open flame.
- Do not allow hands, feet, hair, body parts, clothing or similar articles to come in contact with moving parts, trucks, wheels or drivetrain, while the engine is running.
- Do not operate, or allow others to operate the E-skateboard, until the user understands all instructions, warnings and safety features described in this manual.
- Check with your doctor if you have a medical condition that could affect your ability to use the E-skateboard.
- Persons with head, back or neck ailments or prior surgeries to those areas of the body are not recommended to use this E-skateboard.
- Persons with any mental or physical conditions that may make them susceptible to injury or impair their physical or mental capabilities to recognize, understand and perform all of the safety instructions and to be able to assume the hazards inherent in unit use, should not use the E-skateboard.

The appliance is not to be used by persons (including children) with reduced physical, sensory or mental capabilities, or lack of experience and knowledge, unless they have been given supervision or instruction, children being supervised not to play with the appliance.

This appliance contains batteries that are only replaceable by skilled persons.

This appliance contains batteries that are non-replaceable.

- **WARNING:** For the purposes of recharging the battery, only use the detachable supply unit provided with this appliance.

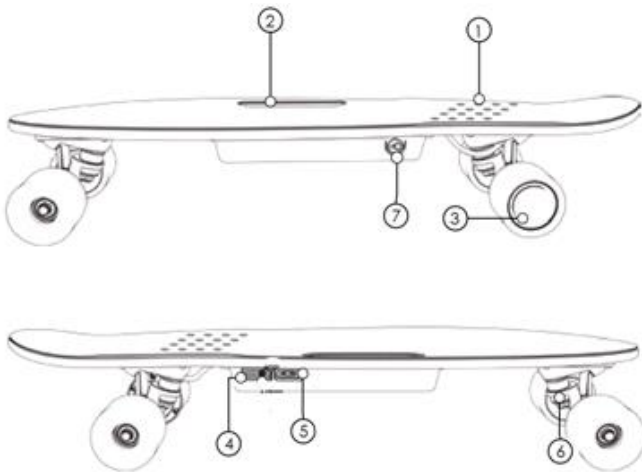
INTRODUCTION

The E-skateboard is a personal transporter. Our technology and production processes are developed with strict testing for each E-skateboard. Operating the E-skateboard without following the contents of this manual may lead to damage to your E-skateboard, or bodily injury.

This manual is designed to give you the information you need for the safe operation and maintenance of your new E-skateboard. Please read it thoroughly before riding your E-skateboard.

PACKAGE CONTENTS

- E-skateboard
- Charging Cable - Model # 22AWGX2C
- Remote Controller
- Operation Manual



FEATURES/PARTS

- | | |
|----------------------|-----------------|
| 1. Charging Port | 5. Power Button |
| 2. Handle | 6. Wheel Truck |
| 3. Brushless Motor | 7. Charge Port |
| 4. Battery Indicator | |

OPERATING PRINCIPALS

The E-skateboard uses brushless motor built in the wheel. It can move fast without rider. Before riding, make sure you can ride normal skateboard without any power.

Before riding, match the remote controller to the skateboard. Choose the low speed mode for the first time riding. Choose the right direction.

Without the power switch on, it can be used as a normal skateboard. But it can't move so smooth as the normal one.

ATTENTION:

Don't let any other people to remote the skateboard when you riding.

A WARNING

Any E-skateboard that does not work properly can cause you to lose control and fall. Inspect the entire device thoroughly before every ride, and do not ride it until any problems have been corrected.

SPECIFICATIONS

Model:	E-skateboard
Net Weight:	3.8 kg
Max Supported Weight:	90 kg
Max Speed:	Up to 17 km/h
Max Distance Range:	Up to 8 km
Minimum Turning Radius:	0°
Battery Type:	Lithium-ion
Motor Power:	150W Brushless Motor
Battery Voltage:	24V
Battery Capacity:	2.2 Ah
Power Requirement:	AC 100-240V, 50-60 Hz

CONTROLS AND DISPLAY

PLEASE READ THE FOLLOWING INSTRUCTIONS CAREFULLY

TURNING YOUR DEVICE ON/OFF

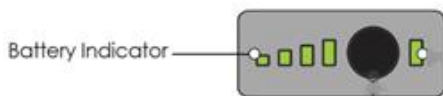
Power ON: Take your device out of the box and place it flat on the floor. Press the power switch (located on the right of your device) once. Check the LED indicator (located in the center of your device). The battery indicator light should be lit, indicating the device is powered on.

Power OFF: Press the power switch once in the OFF position.

BATTERY INDICATOR

The display board is located in the middle of the E-skateboard.

The Red LED light indicates battery levels of 20%, 50%, 75%, and 100% respectively. Please refer to the diagram below. When the battery level is low, the LED light will flash, indicating the device should be charged.



BEFORE RIDING

When riding the E-skateboard you must ensure your feet are firmly placed on the skateboard to help with balance and control.

Do not put items on the skateboard while you are using it. Doing so will increase the probability of collision and cause injury to people, riders, or damage the device.

It is important that you fully understand all elements of your E-skateboard. If these elements are not used correctly, you will not have full control of your E-skateboard. Before you ride, learn the functions of the various mechanisms on your skateboard.

Practice using your E-skateboard at slower speeds in a flat, open area.

PRE-RIDE CHECKLIST

Ensure that your E-skateboard is in proper working order each and every time you ride. If a part of the skateboard does not function correctly, please contact our Customer Support Center. Details on cover of this manual.

A WARNING

Any E-skateboard that does not work properly can cause you to lose control and fall. Do not ride an E-skateboard with a part that is damaged; replace the damaged part before riding.

- Ensure the battery is fully charged before riding your skateboard.
- The E-skateboard can be stored at full power for approximately 3 months. If not in use, it is recommended that you recharge the battery once a month to maintain battery life.
- Please wear all appropriate safety and protective gear before using your device.
- Make sure to wear comfortable clothes and flat closed-toe shoes when operating your E-Skateboard.

SAFETY PRECAUTIONS

The first rule in safe riding is to use common sense.

The E-Skateboard is intended for private property use only. Not to be used on public roads or in public spaces.

- For your safety, always wear a helmet that meets the local safety standards or laws. In the event of an accident, a helmet can protect you from serious injury and in some cases, even death.
- Ride with traffic, not against it.
- Ride defensively; expect the unexpected.
- Give pedestrians the right-of-way.
- Do not ride too close to pedestrians and alert them if you intend to pass them from behind.

Your E-skateboard is not equipped with reflectors. It is not recommended that you ride in conditions of low visibility.

Think about safety when you ride. Below is a helpful checklist for riders.

SAFETY CHECKLIST

- Do not ride above your skill level. Ensure you have had enough practice with all functions and features of your E-skateboard.
- Do not ride too fast - with increased speed comes increased risk. If you are moving at a higher speed, small bumps can turn into large impacts, leading to a higher risk of injury if an accident occurs.
- Do not ride with pets.
- Before stepping on your E-skateboard, make sure it is placed flat on level ground, the power is on, and the Running Indicator light is green. Do not step on if the Running Indicator light is red.
- Do not try to open or modify your E-skateboard. Doing so voids the manufacturer warranty and may cause your E-skateboard to fail.
- Do not use the E-skateboard in a manner that would put people or property in danger.
- If you and your friend(s) are riding E-skateboards together, be sure to keep a safe distance between each other to prevent collisions, property damage, serious injuries or even death.
- Do not operate the E-skateboard while under the influence of drugs and/or alcohol.
- Use your best judgment to keep yourself out of dangerous situations with your E-skateboard.
- It is not recommended to use your E-skateboard in a skate park.
- Do not ride your E-skateboard off of curbs, ramps, empty pools, or similar terrain. Misuse of your E-skateboard voids the manufacturer warranty and may lead to injury or damage.
- Do not continuously spin in place, it will cause dizziness and increases risk of injury.
- Do not abuse your E-skateboard, doing so can damage your unit and cause failure to the operating system leading to physical injury.

- Abuse, including dropping your E-skateboard, voids the manufacturer warranty.
- Do not operate in or near puddles of water, mud, sand, stones, gravel, debris or near rough and rugged terrain.
- The E-skateboard can be used on paved surfaces that are flat and even. If you encounter uneven pavement, please carry your E-skateboard over and past the obstruction.
- Do not ride in inclement weather: snow, rain, hail, sleet, on icy roads or in extreme heat or cold.
- Bend your knees when riding on bumpy or uneven pavement to absorb the shock and vibration and help you keep your balance.
- If you are unsure if you can safely ride on a specific terrain, step off and carry your E-skateboard. ALWAYS BE ON THE SIDE OF CAUTION.
- Do not attempt to ride over bumps or objects greater than 1/2 inch even when prepared and bending your knees.
- PAY ATTENTION - look at where you are riding and be conscious of the road conditions, people, places, property and objects around you.
- Do not operate the E-skateboard in crowded areas.
- Operate your E-skateboard with extreme caution when indoors, especially around people, property, and narrow spaces.
- Do not operate the E-skateboard while using your phone.
- Do not ride your E-skateboard where it is not permitted.
- Do not ride your E-skateboard near motor vehicles or on public roads.
- Do not travel up or down steep hills.
- The E-skateboard is intended for use by a single individual, DO NOT attempt to operate the E-skateboard with two or more people.
- Do not carry anything while riding the E-skateboard.
- Individuals with lack of balance should not attempt to operate the E-skateboard.
- Pregnant women should not operate the E-skateboard.
- Young children and the elderly should not operate the E-skateboard.
- At higher speeds, always take into consideration longer stopping

distances.

- Do not step forward off of your E-skateboard.
- Do not attempt to jump on or off your E-skateboard.
- Do not attempt any stunts or tricks with your E-skateboard.
- Do not ride the E-skateboard in dark or poorly lit areas.
- Do not ride the E-skateboard near or over potholes, cracks or uneven pavement or surfaces.
- Do not operate your E-skateboard off-road.
- Do not turn sharply, especially at high speeds.
- Do not exceed the maximum or minimum weight limits.
- Avoid riding the E-skateboard in unsafe places, including near areas with flammable gas, steam, liquid, dust, fiber, which could cause fire and explosion accidents.

RIDING YOUR E-SKATEBOARD

FAILURE TO FOLLOW ANY OF THE FOLLOWING SAFETY PRECAUTIONS CAN AND MAY LEAD TO DAMAGE TO YOUR DEVICE, VOID YOUR MANUFACTURER WARRANTY, LEAD TO PROPERTY DAMAGE, CAUSE SERIOUS BODILY INJURY, AND CAN LEAD TO DEATH.

OPERATING YOUR DEVICE

Make sure the device is fully charged before the first initial use. Before turning on your E-skateboard, ride it like a normal skateboard to get comfortable with the board style.

When comfortable with the board, turn on your E-skateboard. Stand on the board with a right posture as your riding skateboard without electric power, slide the Accelerator on the Remote Controller gradually.

ATTENTION: Don't speed up and down sharply.

ATTENTION: Don't change the direction backward or forward when riding.

ATTENTION: Don't change the speed mode when riding.

RIDING MODES

Select the High/Low speed mode by the switch on the Remote Controller before standing on and riding.

ATTENTION: Refer to the drawing of the Remote Controller on page 13.

You can choose the direction the skateboard:

Push and hold on the button of "Forward/backward" for seconds.

Slide the "Accelerate/Brake" switch without anybody on the E-skateboard to check if the direction changes after choosing.

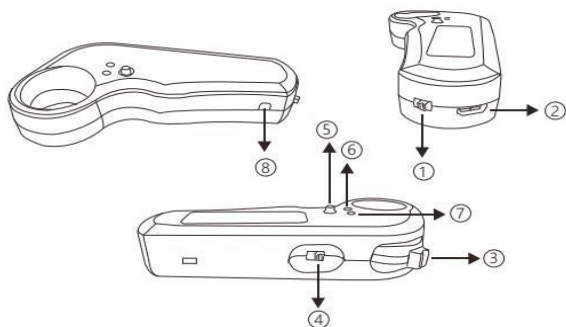
ATTENTION: It can move fast without rider on the E-skateboard if slide the "Accelerator/Brake" switch. Make sure there is nobody on the direction of moving to avoid any harm.

WEIGHT AND SPEED LIMITATIONS

Speed and weight limits are set for your own safety. Please do not exceed the limits listed here in the manual.

- Maximum Weight: 90 kg
- Minimum Weight: 20 kg
- Maximum Speed: Up to 17km/h

REMOTE CONTROLLER



1. Power ON/OFF
2. USB Charge Port
3. Accelerator/Brake
4. High/low speed switch
5. Forward/backward
6. Working signal
7. Battery power indicator
8. Matching indicator with the E-skateboard

How to match remote controller with the e-skateboard:

1: Press & hold the power switch of the e-skateboard for 10 seconds until the lights flash

2: Turn on the remoter controller

3: Press the matching button until the lights stop flashing.

Battery power indicator: the first one is for the Remote Controller. when it is red, the controller need to be charged. The left 3 are for the E-skateboard. When only one light is on, the E- skateboard need to be charged.

WARNING

OPERATING RANGE

The following are some of the major factors that will affect the operating range of your device.

- **Terrain:** Riding distance is highest when riding on a smooth, flat surface. Riding uphill and/or on rough terrain will reduce distance significantly.
- **Weight:** A lighter user will have further range than a heavier user.
- **Ambient temperature:** Please ride and store the device under recommended temperatures, which will increase driving distance, battery life, and overall performance of your device.
- **Speed and Riding Style:** Maintaining a moderate and consistent speed while riding produces maximum distance. Traveling at high speeds for extended periods, frequent starts and stops, idling and frequent acceleration or deceleration will decrease overall distance.

SAFETY ALERTS

While riding your E-skateboard, if there is a system error or illegal operation performed, the device will prompt the user in a variety of ways.

You will notice the Running Indicator Light will turn RED and you will hear a beep sound alerting you to take precaution and cease operation, which may make the device stop suddenly.

The following are common occurrences where you will hear the Safety Alerts. These notices should not be ignored, but appropriate action should be taken to correct any illegal operation, failure or errors.

- Unsafe riding surfaces (uneven, too steep, etc.)
- Battery voltage is too low.
- The device is still charging.
- Overheating, or motor temperature is too high.
- If any or both tires are blocked, the device will stop after 2 seconds.
- When the battery level has depleted below protection mode, the device engine will power off and stop after 15 seconds.

WARNING

When the E-skateboard turns off during a Safety Alert, all operation systems will halt. Do not continue attempting to ride the E-skateboard when the system initiates a stop. Turn your E-skateboard off and back on to unlock it from a Safety Lock.

CHARGING YOUR E-SKATEBOARD

CHARGING THE DEVICE

- Ensure that the charging port is clean and dry.
- Make sure that there is no dust, debris or dirt inside the port.
- Plug the charger into a 240v wall outlet.
- Connect the cable with the power supply (100V ~ 240V; 50, 60 Hz).
- Ensure the light on the charger is lit GREEN.
- Align and connect the 2-pin charging cable into the charging port of the E-skateboard. **DO NOT FORCE THE CHARGER INTO THE CHARGE PORT, AS THIS MAY CAUSE THE PRONGS TO BREAK OFF OR CAUSE PERMANENT DAMAGE TO THE CHARGE PORT.**
- The charging indicator light should change to RED, indicating that your device is now being charged.
- When the RED indicator light on your charger turns to GREEN, then your device is fully charged.
- A full charge may take up to 3 hours.
- After fully charging your E-skateboard, unplug the charger from your device **and from the wall outlet.**

BATTERY CARE / MAINTENANCE

BATTERY SPECIFICATIONS

Battery Type: Rechargeable lithium-ion battery

Charge Time: Up to 2.5 hours

Voltage: 24V

Initial Capacity: 2.15 AH

BATTERY MAINTENANCE

The lithium-ion battery is built into the device. Do not disassemble the device to remove the battery or attempt to separate it from the device.

- The E-skateboard can be stored at full power for approximately 3 months. If not in use, it is recommended that you recharge the battery once a month to maintain battery life.
- Use only the charger and charging cable supplied by. Use of any other charger or cable may lead to damage to the product, overheating and risk of fire. Use of any other charger or cable voids the manufacturer warranty.
- Do not connect or attach the device or the battery to a power supply.

plug or directly to a car's cigarette lighter.

- Do not place the device or batteries near a fire, or into direct sunlight. Heating the device and/or the battery can cause additional heating, breaking, or ignition of the battery inside the device.
- Do not continue charging the battery if it does not recharge within the specified charging time. Doing so may cause the battery to overheat, rupture, or ignite.

To preserve natural resources, please recycle or dispose of batteries properly. This product contains lithium-ion batteries. Local, state, or federal laws may prohibit disposal of lithium-ion batteries in ordinary trash. Consult your local waste authority for information regarding available recycling and/or disposal options.

WARNING

Failure to follow the safety precautions listed below could lead to serious bodily injury and/or death.

- Do not attempt to modify, change, or replace your battery.
- Do not use your device if the battery begins to emit odor, overheats, or begins to leak.
- Do not touch any leaking materials or breathe fumes emitted.
- Do not allow children or animals to touch the battery.
- The battery contains dangerous substances, do not open the battery, or insert anything into the battery.
- Please only use the charger provided.
- Do not attempt to charge the device if the battery has discharge or emits any substances. In that case, immediately distance yourself from the battery in case of fire or explosion.
- Lithium-ion batteries are considered to be hazardous materials. Please follow all local, state and federal laws in regards to recycling, handling and disposing of Lithium-ion batteries.

WARNING

SEEK IMMEDIATE MEDICAL ASSISTANCE IF YOU ARE EXPOSED TO ANY SUBSTANCE THAT IS EMITTED FROM THE BATTERY.

Please note that changes or modifications not expressly approved by the party responsible for compliance could void the user's authority to operate the equipment.

Note: This equipment has been tested and found to comply with the limits for a Class B digital device. These limits are designed to provide reasonable protection against harmful interference in a residential installation. This equipment generates, uses and can radiate radio frequency energy and, if not installed and used in accordance with the instructions, may cause harmful interference to radio communications. However, there is no guarantee that interference will not occur in a particular installation. If this equipment does cause harmful interference to radio or television reception, which can be determined by turning the equipment off and on, the user is encouraged to try to correct the interference by one or more of the following measures:

- Reorient or relocate the receiving antenna.
- Increase the separation between the equipment and receiver.
- Connect the equipment into an outlet on a circuit different from that to which the receiver is connected.
- Consult the dealer or an experienced radio/TV technician for help.

CARE & MAINTENANCE

- Do not expose the device to liquid, moisture, or humidity to avoid damage to the product's internal circuitry.
- Do not use abrasive cleaning solvents to clean the device.
- Do not expose the device to extremely high or low temperatures as this will shorten the life of the electronic device, destroy the battery, and/or distort certain plastic parts.
- Do not dispose of the device in fire as it may explode or combust.
- Do not expose the device to contact with sharp objects as this will cause scratches and damage.
- Do not let the device fall from high places, as doing so may damage the internal circuitry.
- Do not attempt to disassemble the device.

WARNING

Avoid using water or other liquids for cleaning. If water or other liquids enter the E-skateboard, it will cause permanent damage to the internal components.

CAUTION

Users who disassemble the E-skateboard skateboard without permission will void the warranty.

WARRANTY

Hunter Products warrants that your vehicle will be free from defects in materials and workmanship for the vehicle for a period of 12 months, from the date of purchase. This warranty only applies where the product is completely and correctly assembled and used in accordance with all accompanying recommendations and user's instructions. This warranty is in addition to your rights under the Australia Consumer Law. Hunter Products, at its option will provide you with a refund or replacement parts for this product if it becomes defective within the warranty period. Hunter Products will bear the reasonable expense of claiming the warranty. This warranty will no longer apply where the defect is a result of an accident, misuse, abuse, neglect or other causes not arising out of defects in materials or workmanship, nor does it cover damages arising out of damages arising out of service by other than an authorised service person. Our goods come with guarantees that cannot be excluded under the Australian Consumer Law.

You are entitled to a replacement or refund for a major failure and compensation for any other reasonably foreseeable loss or damage. You are also entitled to have the goods repaired or replaced if the goods fail to be of acceptable quality and the failure does not amount to a major failure.

Please retain your receipt as proof of purchase and contact Hunter Products for further assistance on how to process any warranty claims.

Business name: Hunter Products Pty Ltd

Business address: Level 2, 424 Warrigal Road, Moorabbin VIC 3189, Australia

Toll Free Phone: 1800 224 094 (Monday to Friday 9.00 to 5.00pm AEST)

Email address: enquiries@hunterproducts.com.au

SERVICE & REPAIRS

If your product requires service, repairs or replacement parts, please visit us online at www.electricrideon.com.au

Or contact us at:

Toll Free Service Phone: 1800 224 094

email: enquiries@hunterproducts.com.au

Hours: 9.00 AM - 5.00 PM (AEST), Monday - Friday